

Step 1 Select Boards

Select the boards that you will need for the project. A detailed description is available on the **SchmartBOARD™** website,

Tip Print out a mechanical drawing for each of the boards that you will be using, and map out the placement of components and connections before doing it on the SchmartBOARDS™. They are available on the on the part description page of the SchmartBOARD™ website.

Step 2 Connect Components

Solder the components to each board.

Tip-Segment your project into blocks to take advantage of the pre-routed traces on SchmartBOARD™, this minimizes the number of wires needed on each SchmartBOARD™.

Step 3 Connect Boards

Using the mechanical bridge connect the boards together. You will notice two slots on each side of the SchmartBOARD™. The bridges have two notches that fit the slots on the boards. (Figure 1-4)

Step 4 Connect Wires

Connect the wires. We have included wires and male headers in our combination and multi-packs. Use the headers to connect the wires.

Step 5 Test and make modifications-Modifications can be made simply as needed.

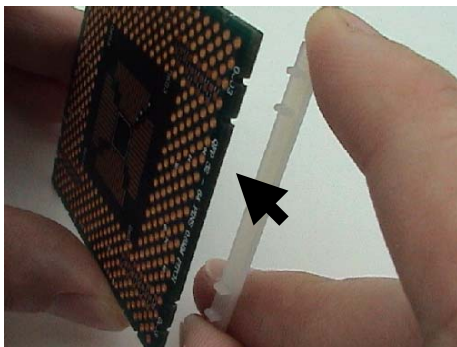


Figure 1 – Schmart mechanical bridge being connected to a SchmartBOARD™.

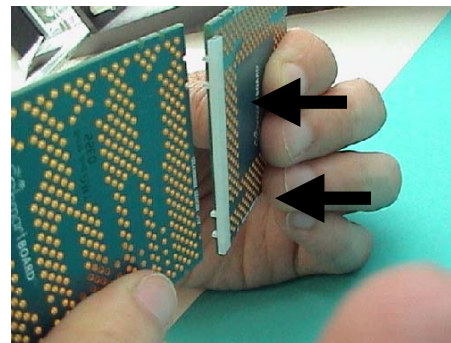


Figure 2 – 2nd SchmartBOARD™ connected to the 1st SchmartBOARD™ via a Schmart mechanical bridge

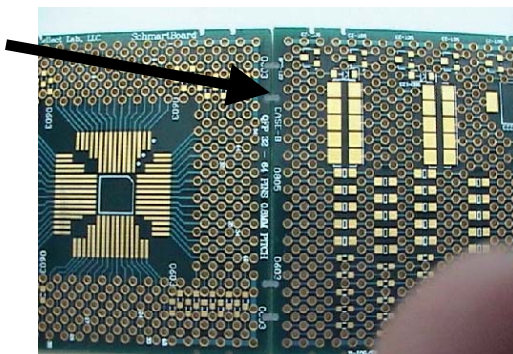


Figure 3 – Top View of 2 SchmartBOARDS™ connected via a Schmart mechanical bridge (A dab of Glue such as KrazyGlue can be put on the top of the board where the mechanical bridge shows through to make board rigid)

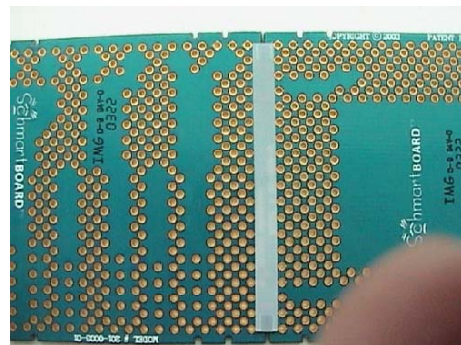


Figure 4 – Bottom View of 2 SchmartBOARDS™ connected via a Schmart mechanical bridge